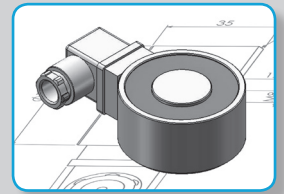




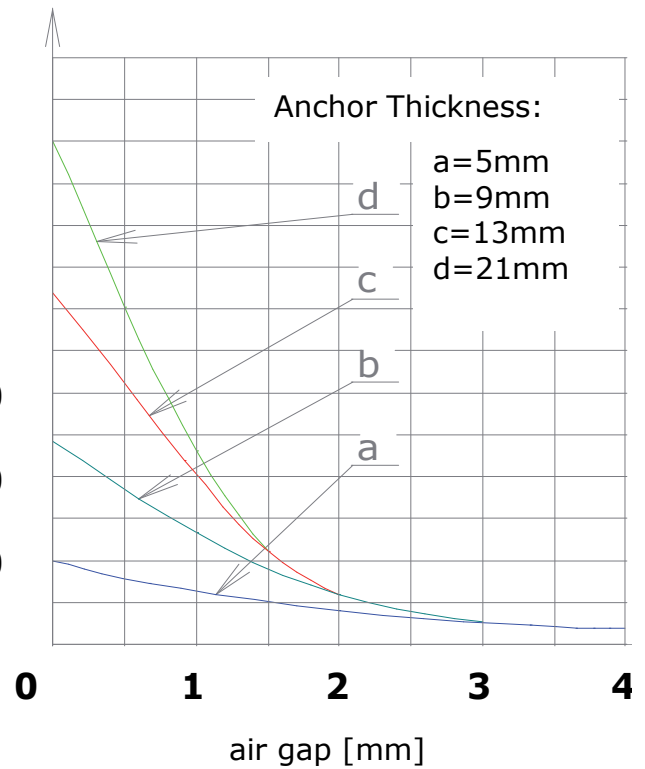
**ELECTROMAGNET**  
Plug Type



Item no.						
4	1	9	1	1	5	5
1	2	3	4	5	6	7
Voltage:						
230VAC		9				
205VDC		8				
110VAC		6				
Application:						
St connector on OD				1		
St connector back side					4	

Holding Force[N]

17500  
15000  
12500  
10000  
7500  
5000  
2500



Specific Values	
Duty Cycles [sec]	∞ [100%ED]
Power [W]	50
Holding Force [N]	15000
Anchor Thick. [mm]	21
Weight [KG]	10,5
Sizes [mm]	
A	Ø180
B	63
C	84,8
D	161
E	M24
F	36
G	16
H	131
I	300
J	19,5
K	3
L	65
M	M8

