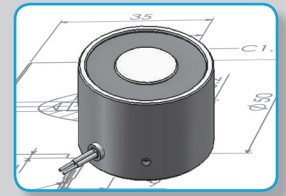


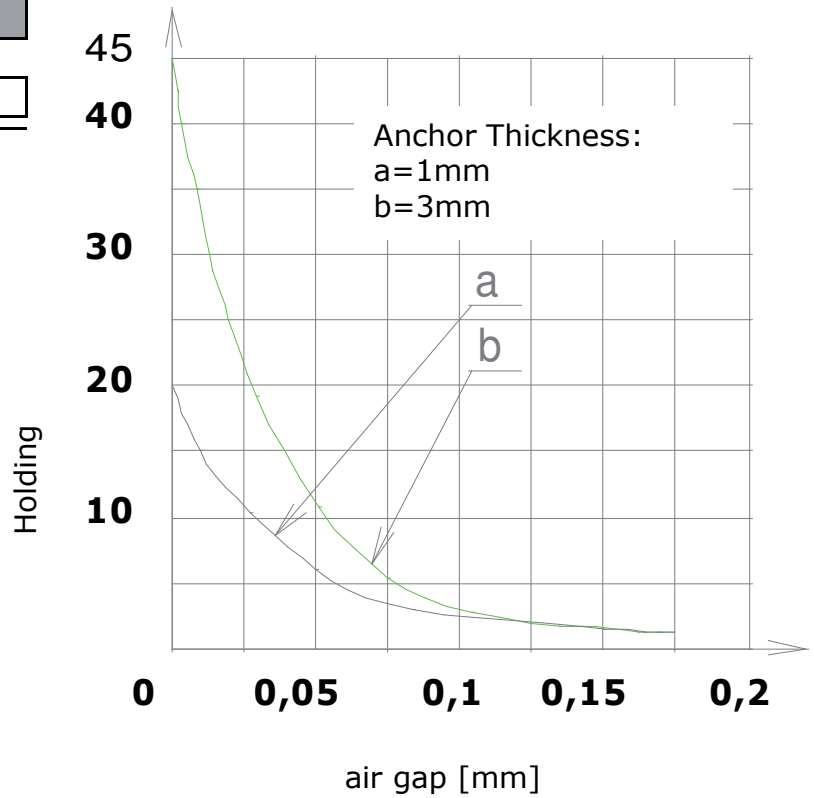


PERMANENT ELECTRO MAGNET

Cable



Item no.						
4	2	4	0	0	1	3
1	2	3	4	5	6	7
Voltage:						
24VDC		4				
6 VDC		2				
12VDC		3				
48VDC		5				
Application:						
St zn cable				0		
St zn connector				1		



Data	Specific Values	
	Duty Cycles [sec]	10%ED
	Power [W]	2
	Holding Force [N]	45
	Anchor Thick. [mm]	3
	Weight [KG]	0,06
	Sizes [mm]	
	A	20
	B	25
	C	200
	D	M4
	E	14
F	9	

