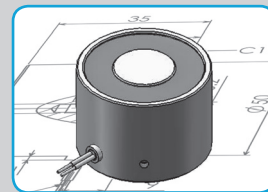


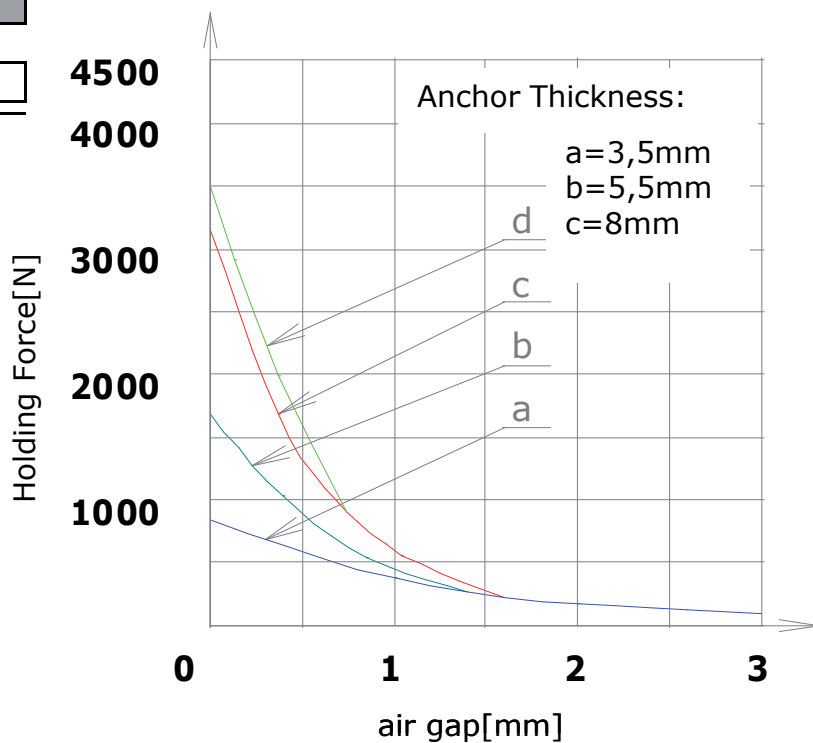


ELECTROMAGNET

Cable



Item no.						
<input type="text" value="4"/>	<input type="text" value="1"/>	<input type="text" value="4"/>	<input type="text" value="1"/>	<input type="text" value="0"/>	<input type="text" value="4"/>	<input type="text" value="5"/>
1	2	3	4	5	6	7
Voltage:						
24VDC	<input type="text" value="4"/>					
6 VDC	<input type="text" value="2"/>					
12VDC	<input type="text" value="3"/>					
48VDC	<input type="text" value="5"/>					
Application:						
St zn cable	<input type="text" value="0"/>					
St zn connector	<input type="text" value="1"/>					



Specific Values	
Duty Cycles [sec]	∞ [100%ED]
Power [W]	20,5
Holding Force [N]	3400
Anchor Thick. [mm]	11
Weight [KG]	2,1
Sizes [mm]	
A	100
B	43
C	42,8
D	91,3
E	M10
F	15
G	8
H	42
I	300
J	9
K	3
L	37,5
M	M5

