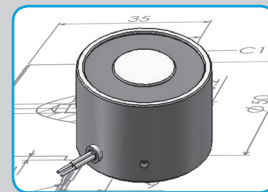


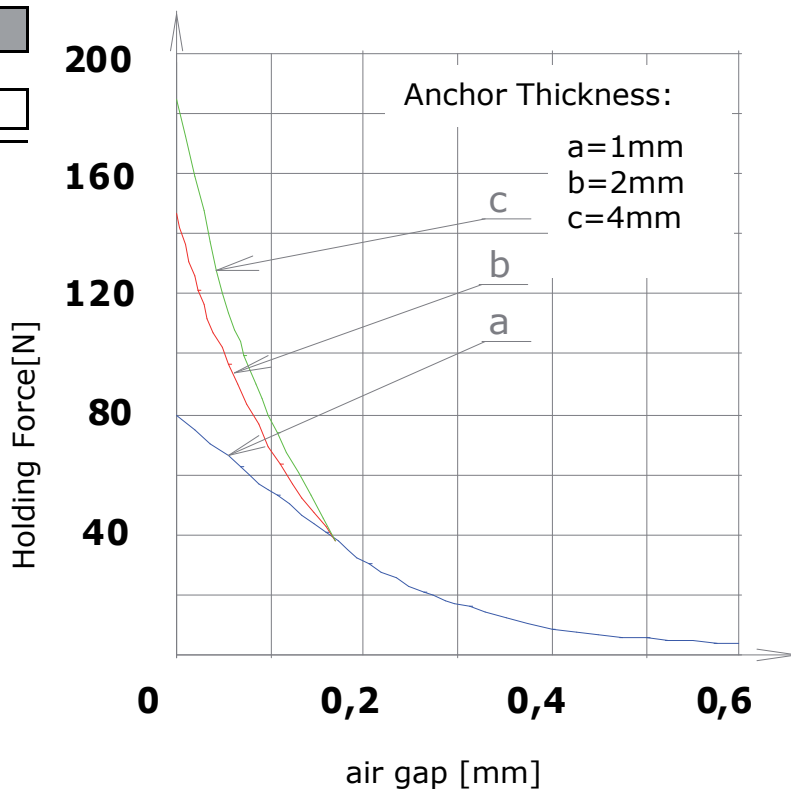


PERMANENT ELECTRO MAGNET

Cable



Item no.						
4	2	4	0	0	2	0
1	2	3	4	5	6	7
Voltage:						
24VDC		4				
6 VDC		2				
12VDC		3				
48VDC		5				
Application:						
St zn cable				0		
St zn connector				1		



Data	Specific Values	
	Duty Cycles [sec]	10%ED
	Power [W]	7,5
	Holding Force [N]	180
	Anchor Thick. [mm]	4
	Weight [KG]	0,18
	Sizes [mm]	
	A	35
	B	29
	C	200
	D	M5
	E	19,5
F	9,5	

