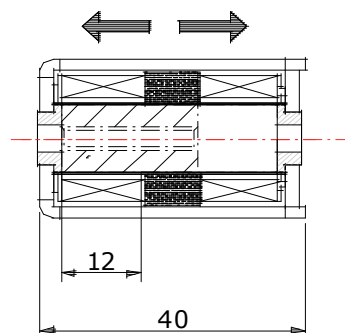
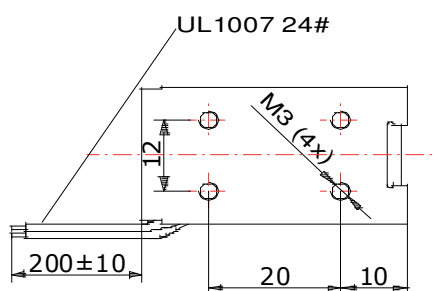
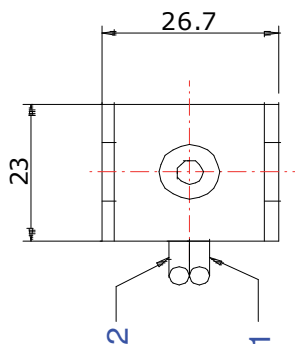
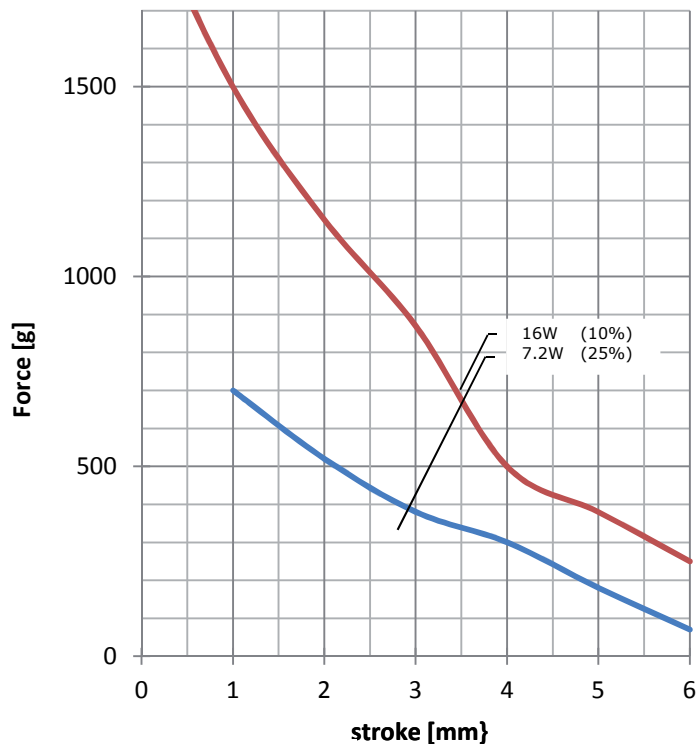


Item No.						
3	5		2		4	2
1	2	3	4	5	6	7
Voltage:						
6 VDC		2				
12 VDC		3				
24 VDC		4				
48 VDC		5				
Application:						
one side plunger				2		
double side plunger				6		



Data	Voltage [V]	Resistance [Ω]	Power [W]	Permanent "0" [g]
	6	20	7,2	600
	12	35	16	600
	24	50	25	600